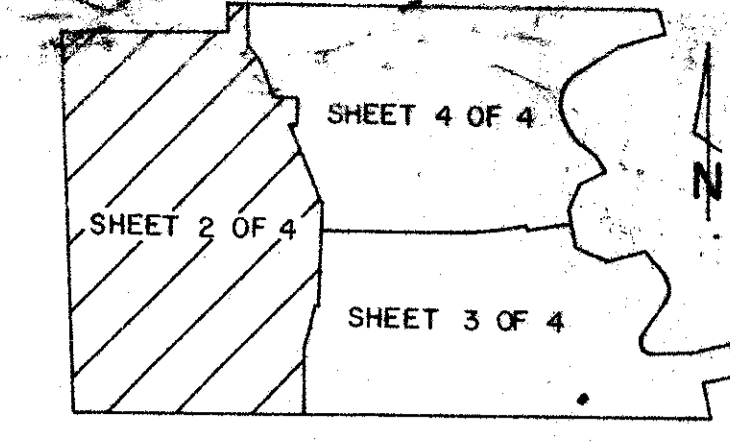
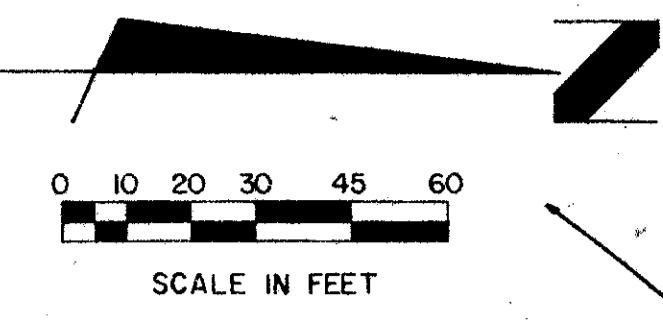


MARINER'S COVE PLAT ONE

PART OF OAK CREEK, A P.U.D.
SITUATE IN SECTION 29, TWP 41S, RGE 43E,
PALM BEACH COUNTY, FLORIDA



194

STATE OF FLORIDA
COUNTY OF PALM BEACH

THIS PLAT WAS FILED FOR RECORD
THIS _____ DAY OF _____
A.D., 1987, AND DULY RECORDED
IN PLAT BOOK _____ ON PAGES
_____ AND/THRU _____

JOHN B. DUNKLE, CLERK
BY: _____ D.C.

P.O.C. - S 1/4 CORNER
SECTION 29, TWP 41S, RGE 43 E

WINDSOR ESTATES
(PB 30, PG 72)

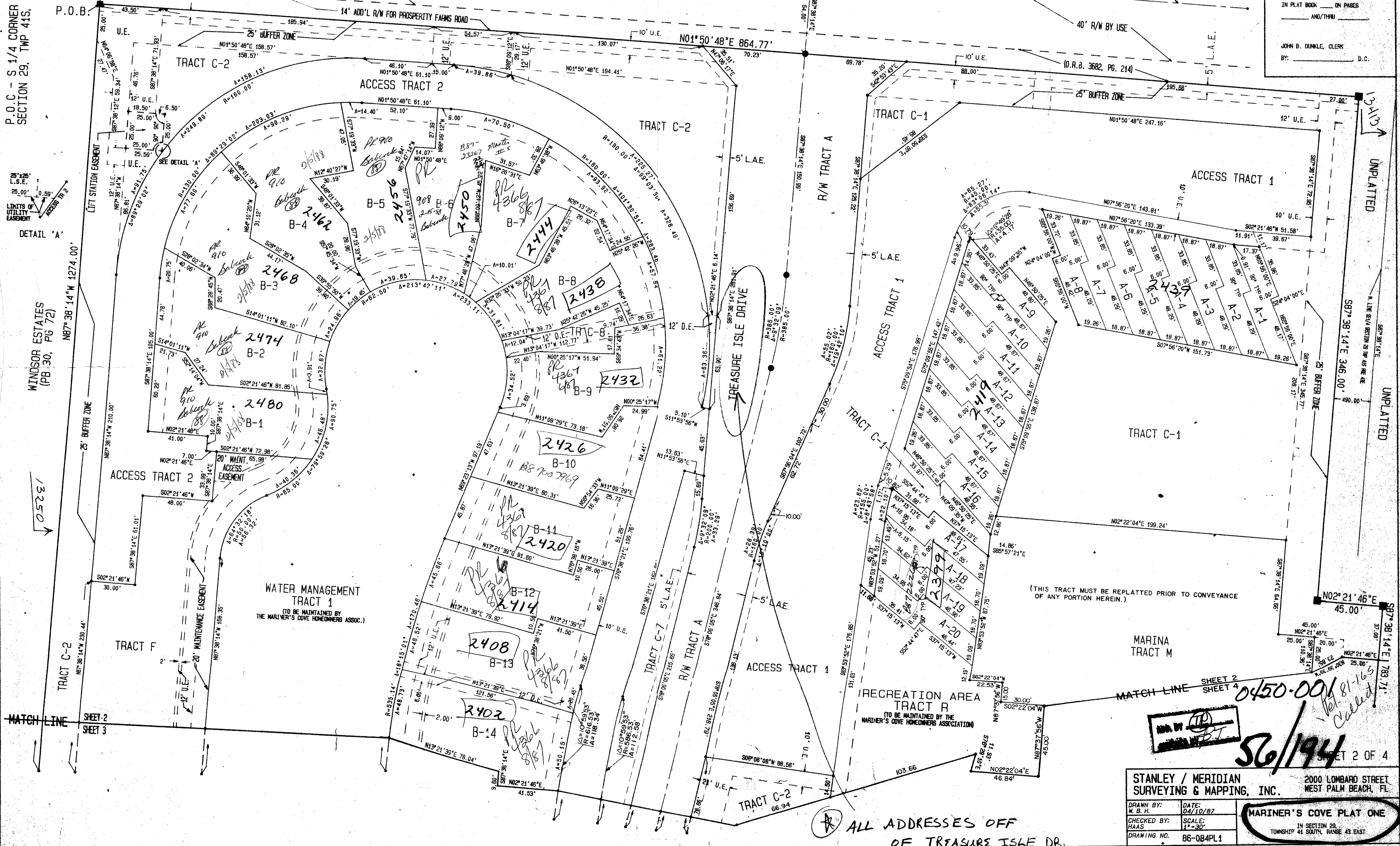
MATCH LINE SHEET 2 SHEET 3

(O.R.B. 4850, PG. 1098)

(O.R.B. 3682, PG. 214)

UNPLATTED

UNPLATTED



(THIS TRACT MUST BE REPLATTED PRIOR TO CONVEYANCE OF ANY PORTION HEREIN.)

MATCH LINE SHEET 2 SHEET 4

STANLEY / MERIDIAN
SURVEYING & MAPPING, INC. 2000 LOMBARD STREET
WEST PALM BEACH, FL

DRAWN BY: M.B.H. DATE: 04/10/87
CHECKED BY: HAAS SCALE: 1"=30'
DRAWING NO. 86-084PL1

MARINER'S COVE PLAT ONE
IN SECTION 29,
TOWNSHIP 41 SOUTH, RANGE 43 EAST

ALL ADDRESSES OFF
OF TREASURE ISLE DR.

0450-001
56/194
SHEET 2 OF 4